



WEST PARK NEWS

July 2020

Wednesday 15th July 2020

DATES FOR YOUR DIARY

Wednesday 15th July - last day of term

Thursday 3rd September - School re-opens for 2020 / 2021 school year. Pupils should return in uniform.

Thursday 3rd September - dinner money remains at £2.05 per day for pupils Y3 to Y6.

Thursday 22nd October - Final day of the half term

Friday 23rd October - School Closed for Staff

Development Day

Monday 2nd November - Return to school after half term holiday

Dates for the whole school year will appear on our school website during the first week of

September 2020. The school holiday calendar can be found on our school website.

New faces in September

We are happy to welcome our new class teacher in September. Mr Calvert will be working in our Y3/4 class and I am sure that the whole school community will make him feel welcome.

Arrangements for September

As you all know, we are planning for a full return of all pupils in September. West Park School continues to follow Government Guidance and detailed plans along with a full Risk Assessment for the whole school will follow.

There will be a staggered start and end of the school day, with slightly different timings for playtime and lunchtime. Breakfast Club begins on Monday 7th September at 8am. Please see details of all other staggered starts on this newsletter.

More details will follow, via Class Dojo, during the Summer Holidays. A plan is in place allowing for the safe entry and exit from school each day for over 300 pupils - all plans must be detailed in our Risk Assessment and agreed by Ad Astra Trustees.

Early Years - Nursery and Reception

Parents should use EYFS entrance doors

Nursery

Timings: 8:30 to 11:30 (morning session)
12:10 to 3:10 (afternoon session)

Reception

Start time: 8:30 to 8:40am
Pick up time: 3pm
Lunchtime: 11:45 to 12:30

Year One and Year Two

Entry and Exit from Top Coniscliffe Road Gate

Start time: 8.45 to 9am
Pick up time: 3.20pm
Lunchtime: 12pm to 1pm

Year Three and Four

Entry and Exit from Bottom Coniscliffe Road Gate

Start time: 8.45 to 9am
Pick up time: 3.20pm
Lunchtime: 12pm to 12:45pm

Year Five and Six

Entry and Exit from Bottom Coniscliffe Road Gate

Start time: 8.30 to 8:45
Pick up time: 3.10pm
Lunchtime: 12:30pm to 1:15pm

Packed Lunches

From September we would like to tighten up arrangements for the children bringing a packed lunch. Firstly, suitable containers should be used:

- Lunch must be brought in a packed lunch box or packed lunch bag.
- Drinks should fit inside the lunch box and not be brought separately.
- Lunch boxes should be clearly marked with the pupil name.

Also

- Lunches should be healthy and should not contain chocolate bars, sweets or other confectionery.
- Remember, refrigeration facilities are not available for packed lunches

Lunchtime staff will be on duty, carrying out additional cleaning tasks. Strict handwashing regimes will be followed, tables in use will be wiped down, as well as lunchboxes, before and after use.

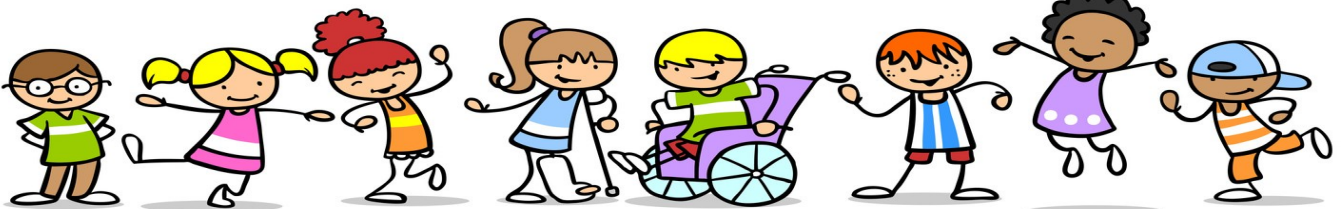


PE Kits

Many PE Kits remain in school and parents may be wondering if clothing still fits for a September start. To allow time for parents to get school PE kit organised pupils can wear their own PE clothing during September, with full school PE kit being re-introduced in October. No football kits will be allowed however, please substitute school t-shirts and hoodies with your own alternative if present kit no longer fits your child!

School Places Available!

For your information, we have places available in all year groups apart from Reception and Year Five from September, with a small number of places in our Nursery. Spread the word!



School Bags, Jewellery and Other Equipment.

Just a quick annual reminder, as you may be buying equipment for the new term. Pupils are now able to bring bags into school but should only bring these in when absolutely necessary.

Large back packs must not be brought into school. Children should only require a draw string bag and a book bag in school (both available from the office).

Back-packs are far too large for the limited space in our cloakrooms. Children may need extra kit on outdoor PE or swimming days, this could be brought in a separate draw string bag rather than a wide backpack which spreads across other children's pegs.

Could I also remind parents / carers that the pupils do not require additional stationery in school. Everything is provided and the children do not need to bring pencil cases into class.

Health and Safety guidelines must be followed in school and **ear-rings should not be worn** even if covered by plasters. If a child attends in ear-rings, parents / carers will be called into school to remove the jewellery.

I would ask for your continued support.



Enjoy your summer!