



WEST PARK SCHOOL

January Newsletter

Friday 31st
January 2020

This newsletter can also be viewed at www.westpark.hartlepool.sch.uk

DATES FOR YOUR DIARY

February
Week beginning 3rd Y2 and Y6 Assessment Week
Thursday 13th Break up for half term
Friday 14th PD Day - school closed
24th February – school reopens
Monday 24th Carlton Week (Y5/6 residential)

March
Monday 2nd March Story Telling Week
Thursday 5th World Book Day
Week beginning 16th March – Assessment Week Y1, Y3, Y4, Y5
Wednesday 25th LGB Meeting 4pm
Thursday 26th Parent Consultations 3.30 to 6pm
Monday 30th Parent Consultation 3.30 to 5pm
Week beginning 30th – Celebration of Cultures Week

April
Thursday 2nd Parent Consultation 3.30 to 5pm
Friday 3rd School closes for Easter Break

Term 3 Begins

Monday 20th April School reopens

NOTE: Summer Term Assessment Schedule

- **Year 2 SATs—1st May to 19th June**
- **Year One Phonics Screening—week beginning 8th June**
- **Y4 Multiplication Testing - 8th June to 26th June**
- **Y1, Y3, Y4, Y5 - teacher assessment period—June 2020**
- **Y6 SATs week 11th May - reading and maths.**
- **Y6 SATs writing assessment - 1st May to 19th June 2020**

School Trips and Enrichment Activities

As parents know, at West Park School we have always valued a broad and balanced curriculum and have developed some dynamic theme work over the years, covering many subject areas, to inspire your children. As part of this programme, we also value schools trips to museums, local sites etc etc. We also invite experts and inspirational visitors and performers into school to widen and enhance our curriculum offer.

As you are all fully aware, these extra-curricular activities come at a cost. As a school we are not able to fund many of these and ask for contributions from parents and carers. As with the recent pantomime, the school often pays a percentage of the cost (50% in the case of the Aladdin panto) but this is not always possible. The pupils really enjoy these activities and we are committed to continuing with this policy of enriching the curriculum with your support.

Parent Governor

It was fabulous to see the level of parent support during our recent Parent Governor selection period. Ten parents showed an interest, which is really impressive. Congratulations to Miss McCartney who was selected as a new governor and Mr Thompson, who was re-elected to our Local Governing Body.

Tree Planting

After receiving over 400 saplings from the Woodland Trust, our tree planting is almost complete. Well done to all of the children who sponsored, then planted trees. A big thanks to Wild Green Spaces, a local group of volunteers, who visited the school on two occasions to help us plant this impressive number of trees.



Outdoor PE Kit

West Park School is committed to promoting active play and physical activity. Many classes continue to use the school grounds for PE during the winter months. Mr Robinson is concerned that children do not always have their outdoor PE kit in school.

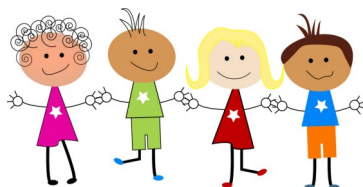
Children should have:

- A blue or black pair of tracksuit bottoms—not shorts for outdoor PE during the winter.
- A royal blue t-shirt (same as indoor kit)
- A royal blue school hoodie or old school sweat-shirt
- Wearing their woollen hats and gloves is optional to keep them warm
- Suitable footwear (old trainers!)

FWPS

Once again, we are most grateful for the amazing work done by our Friends of West Park School. This term funding has allowed us to:

- ◆ Purchase new star costumes for all nursery children performing in the recent Christmas performance.
- ◆ Purchase 15 ipads, allowing the children to access one tablet each rather than use the devices one between two.
- ◆ Further develop the outdoor area, with the purchase of an amazing new greenhouse.
- ◆ Purchase hundreds of new reading books, to be used by children across the school.
- ◆ Fund fully our Celebration of Cultures Week (no parental contributions will be needed).



Breakfast Club Places

Just to keep everyone up to date, there continues to be availability in our Breakfast Club. Due to perceived demand, we increased numbers from 36 to 50 places in September 2019. Surprisingly, these places have not been filled and we continue to have vacancies. At present, until we are full on a daily basis, ad hoc places are also available if you have last minute issues with childcare from 8am onwards. These can be arranged by a phone call to the office as late as 4.30 on the day before.

Give the school office a call at any time for further information.



Sporting Achievements

We continue to be extremely proud of our sports teams. Recent events to report include:

- ◆ Our AMAZING girls football team performed at the Hartlepool SFA tournament. They played 7 games winning all 7 and not conceding a single goal.
- ◆ West Park penalty squad, through to the town semi finals.
- ◆ The West Park Sports Hall Athletics team had a great afternoon in late December competing in the Cluster event. They qualified for the town finals which took place in January.

